

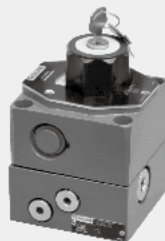


4.7

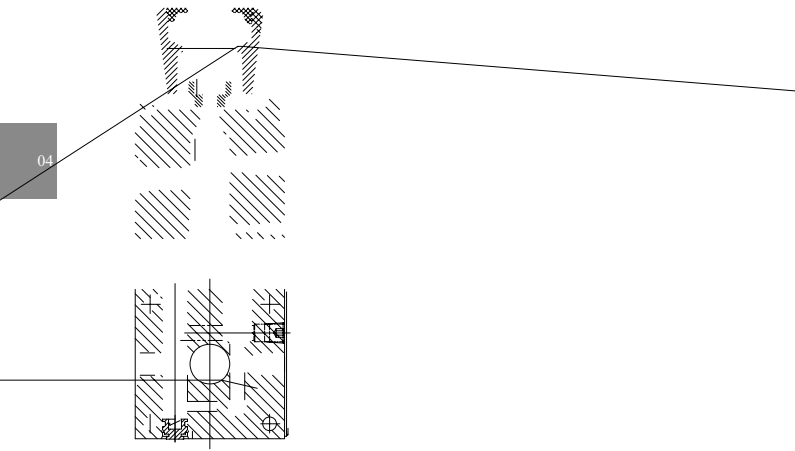
2FRM5 10 16

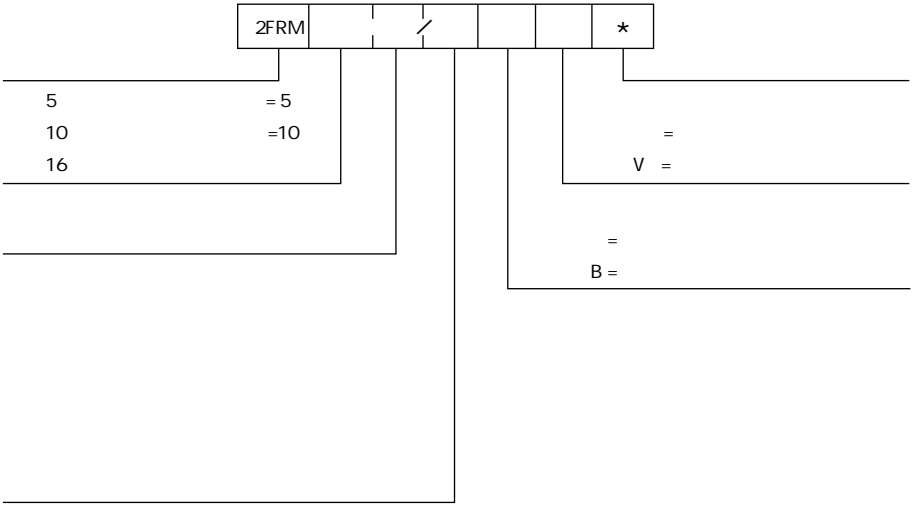
Z4S5 10 16

5, 10, 16  
315bar  
160L/min

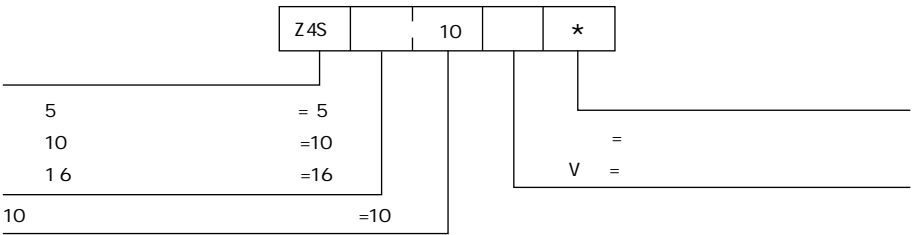


02	-
03	-
04	-
05	-
06-08	



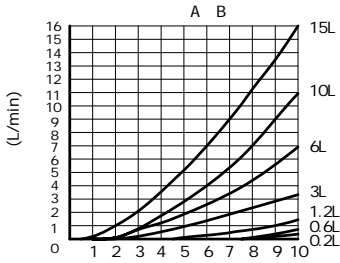


04

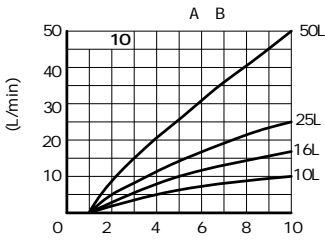




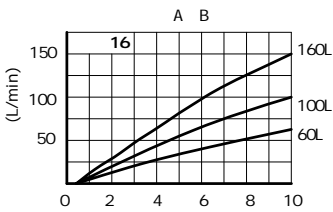
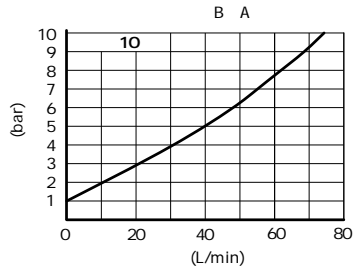
HLP46 =40 ± 5



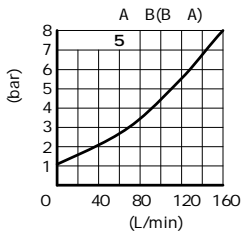
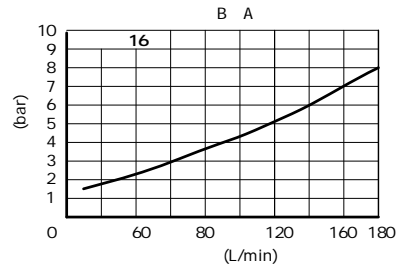
◀ 2FRM5



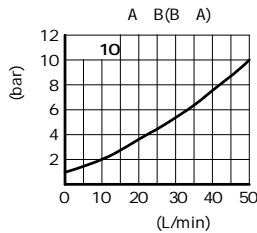
▲ 2FRM10



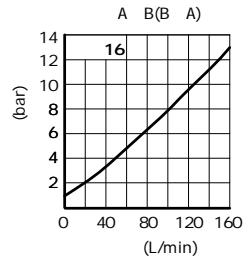
▲ 2FRM16



▲ Z4S5



▲ Z4S10

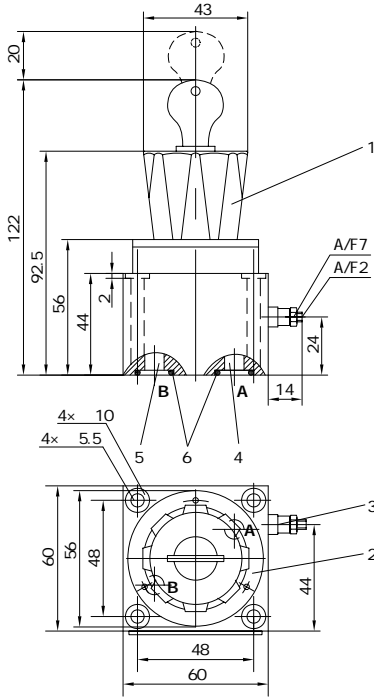


▲ Z4S16

04

( mm)

2FRM5

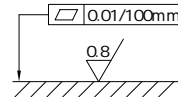


- 1-
- 2-
- 3-
- 4- "A"
- 5- "B"
- 6-0 12x 2.5

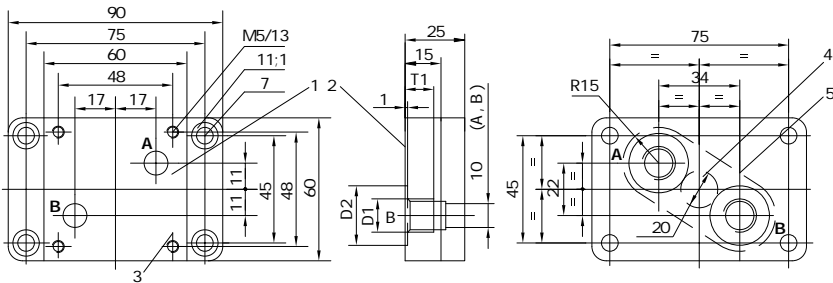
4-M5x 50 GB/T70.1-10.9

$M_k=8.9Nm$

G44/01 (02), G45/01 (02)



2FRM5



- 1-
- 2-
- 3-
- 4- 20
- 5-

	D1	D2	T1
G44/01 (02)	G1/4(M14x 1.5)	25	12
G45/01 (02)	G1/2(M22x 1.5)	32	15

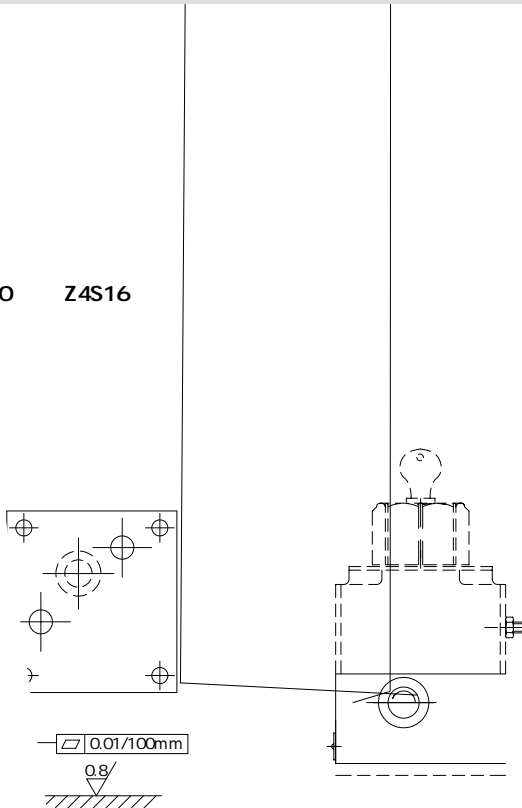


( : mm)

- 1-  
2-  
3-  
4-0 12x 2.5  
5-

:  
4-M5x 80 GB/T70.1-10.9  
 $M_k=8.9\text{Nm}$

S10 Z4S16



B1	B2	B3	D1	H1	H2	H3	H4	L1	L2	L3
1.5	82.5	9.5	9	50	30	125	205	95	76	9.5
1.5	101.5	11	11	85	40	147	272	123.5	101.5	11